

Montague Road

Uxbridge • • UB8 1QN

PCM: £2,500 PCM



coopers
est 1986

A well presented and spacious four bedroom semi detached house to rent located within walking distance to Uxbridge Underground Station, Bus Station and Uxbridge High Street. The property is also conveniently located nearby to the A40/M40/M25 Motorways, Brunel University and Hillingdon Hospital are easily accessible.

Features include four double bedrooms, spacious lounge, dining room, two conservatories, modern kitchen, family bathroom, private rear garden and off street parking for one car.

Furnished and available now.

Four Bedroom Semi Detached House

Two Conservatories

Spacious Lounge

Dining Room

Modern Kitchen

Private Rear Garden

Furnished

Next to Uxbridge Underground Station

Amenities Nearby

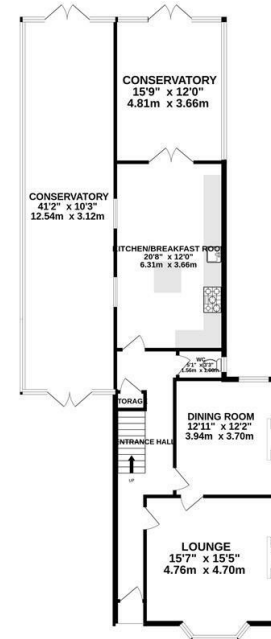
Great Transport Links

Available Date

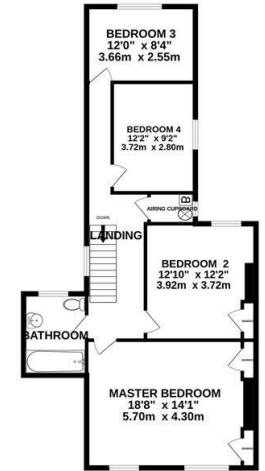
3rd January 2026



GROUND FLOOR
1397 sq.ft. (129.8 sq.m.) approx.



1ST FLOOR
845 sq.ft. (78.5 sq.m.) approx.



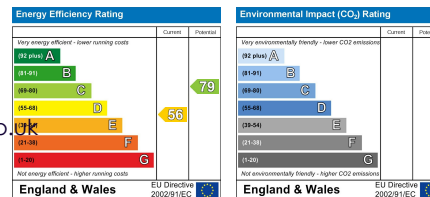
TOTAL FLOOR AREA: 2242 sq.ft. (208.3 sq.m.) approx.
While every attempt has been made to ensure the accuracy of the floorplan contained here, measurements of doors, windows, rooms and any other items are approximate and no responsibility is taken for any error, omission or misstatement. This plan is for illustrative purposes only and should be used as such by any prospective purchaser. The services, systems and appliances shown have not been tested and no guarantee as to their condition or reliability can be given.
Made with Maptopia ©2024



01895 230 103

109 Hillingdon Hill, Hillingdon Village,
Middlesex, UB10 0JQ
propertymanagement@coopersresidential.co.uk

CoopersResidential.co.uk



Important Notice: These particulars, whilst believed to be accurate are set out as a general outline only for guidance and do not constitute any part of an offer or contract. Intending purchasers should not rely on them as statements or representation of fact, but must satisfy themselves by inspection or otherwise has the authority to make or give any representation or warranty in respect of the property.

coopers
est 1986